

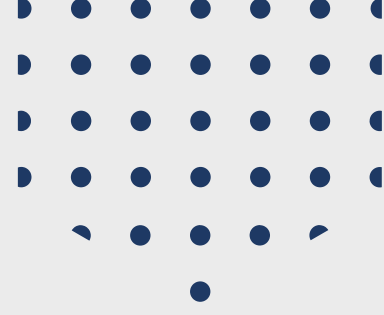
Strictly Confidential

SAN MARINO BANKING

A New Frontier



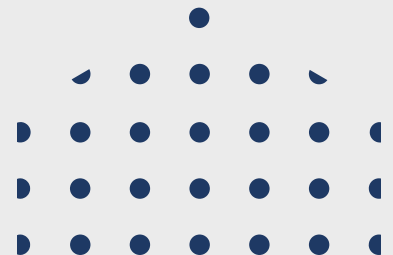
Institutions of the
Republic of San Marino

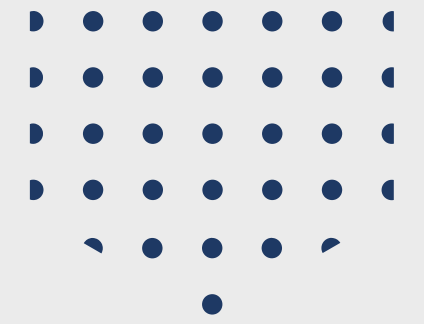


WHY SAN MARINO?

San Marino is one of the world's oldest independent republics located on the Italian peninsula.

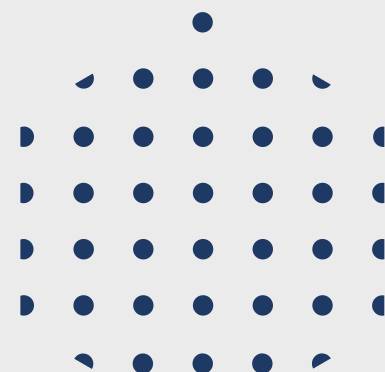
An advanced economy with a robust banking sector and a stable, forward thinking government is fertile ground for a bustling fintech ecosystem.

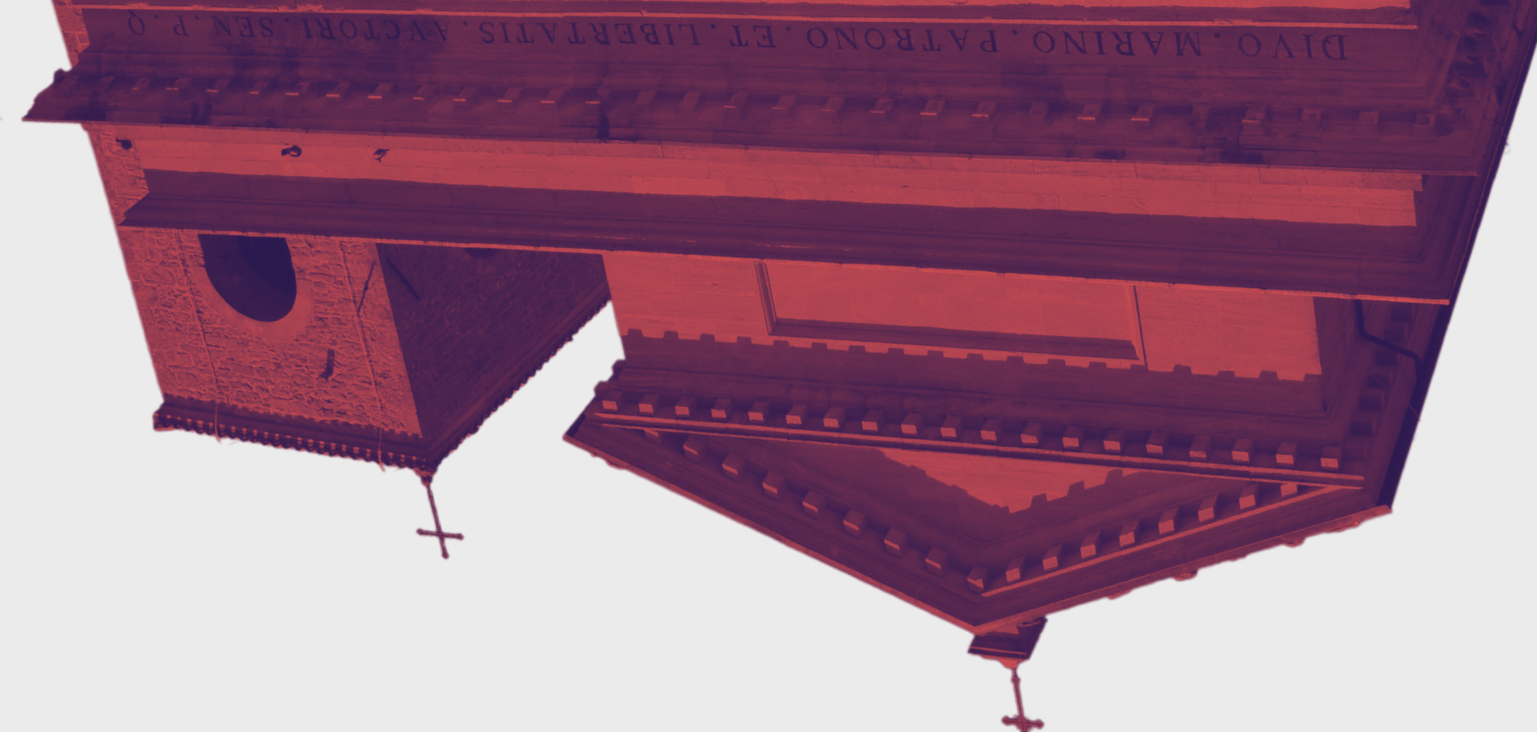




THE OPPORTUNITY:

SAXE Global and PSP Angels Management are acting as exclusive representatives of the Institutions of the Republic of San Marino to open up early-access to the San Marino banking system for crypto, e-money & payments, securities dealer, Forex and I-gaming companies.





THE DETAILS:

1. BANKING

Fully Licensed Bank
Correspondent Accounts
Segregated/Client Accounts
Wide Risk Acceptance
SWIFT/SEPA/TARGET 2
Multicurrency (inc. USD)
Dedicated Accounts
C2B, B2C, B2B Enabled
Fully Flexible Transaction Fees

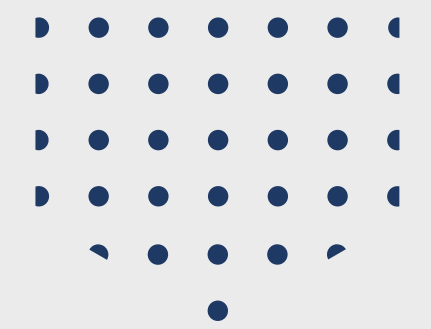
2. PROCESSING

Visa & MC Members
Unionpay Membership
Direct Acquirer Bank
Global Processing
Wide Risk Acceptance
Bank-Level Security
Merchant Account
Fully Flexible Fees

3. LICENSURE

Early-Access to the
San Marino Crypto
License Live in Q1
2023
Little to No Tax-
Obligations
PSP Licensure
Available.

MORE ABOUT THE PROGRAM



1. FULLY BACKED

This initiative is fully backed by local decision-makers and is primarily aimed at developing San Marino as an international transactional banking hub, attracting fintechs and online businesses irrespective of target market location.

2. EFFICIENCY & SECURITY

Setting up in San Marino allows you to take control of a brick-and-mortar banking relationship like no other. A trade union of San Marino with the EU grants all the functionality of a Tier-1 Bank and processor, whilst at the same time being outside of most of the EEA legislative burden, allowing for flexibility.

3. YOU'RE IN GOOD COMPANY



crypto.com

capital.com

...& others have all committed to the program



PROCESS

1. SUBSTANCE (2 weeks)

One local S.p.A. company is set up per group
(optional for licensed clients on a case-by-case basis).
Potential tax-free status for the first 5 fiscal years.
Necessary to mitigate banking risk.

2. BANKING (3 weeks)

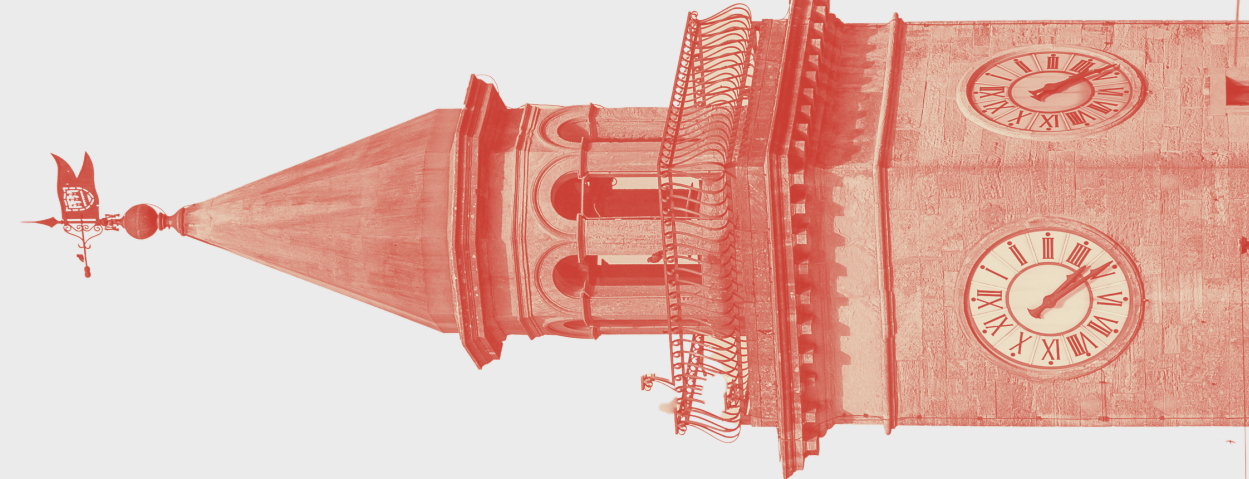
Dedicated accounts opened for unlimited
number of group companies (can be
offshore, EU) with local S.p.A. in-tandem.

3. INTEGRATION (1 week)

Once the account is set up, processing
integration can take place, API's are built
out, online banking access is given.
The whole process can be done remotely.



APPROXIMATE PRICING PACKAGES



Basic

Local Substance Included (may not be needed in some cases- decided post initial call)

EUR 7,000

(operational)

Dedicated Segregated Banking Facilities (for the whole group of companies).

EUR 13,000

(segregated w./o.
substance)

Client funds, C2B, B2C enabled banking.

Fully custom fixed or %-based fee schedule depending on transactional volumes.

EUR 23,000

(w. substance)

Pro

Local Company Included (may not be needed in some cases- decided post initial call).

Dedicated Segregated Banking Facilities (for the whole group of companies).

Client funds, C2B, B2C enabled banking, fully custom fixed or %-based fees.

EUR 30,000

Merchant account and processing facilities, custom fees, direct acquirer bank.

Ultra

Fully-customized pricing and functionality package, for a tailored banking and processing facility for high volume clients. Re-location for the team can be arranged, local gvt. program membership, tax breaks. Applicable to highly specialised demands.

CUSTOM

1. BEST OF SECURE, FLEXIBLE BANKING

One flexible, brick-and-mortar banking and processing relationship to be cross-utilised for your whole group of companies including any offshore flow. A fully custom set of commercials allows for utmost flexibility for you to optimise transactional costs.

2. A STRONG PLATFORM TO GROW

San Marino's unique legal status makes the region immune to most regulatory winds of change from outside. This makes sure your banking is secured without having to compromise, so you can focus on doing what you do best- running and growing your business.

CONTACT DETAILS

Mark Walsh, Vice President, SAXE Global

✉ mark@saxe-global.uk

📍 @mark_saxe

☎ +44 7868 812 499

Viktoria Soltesz, CEO , PSP Angels

✉ viktoria@pspangels.com

📍 @pspangels

☎ +356 996 25490

